

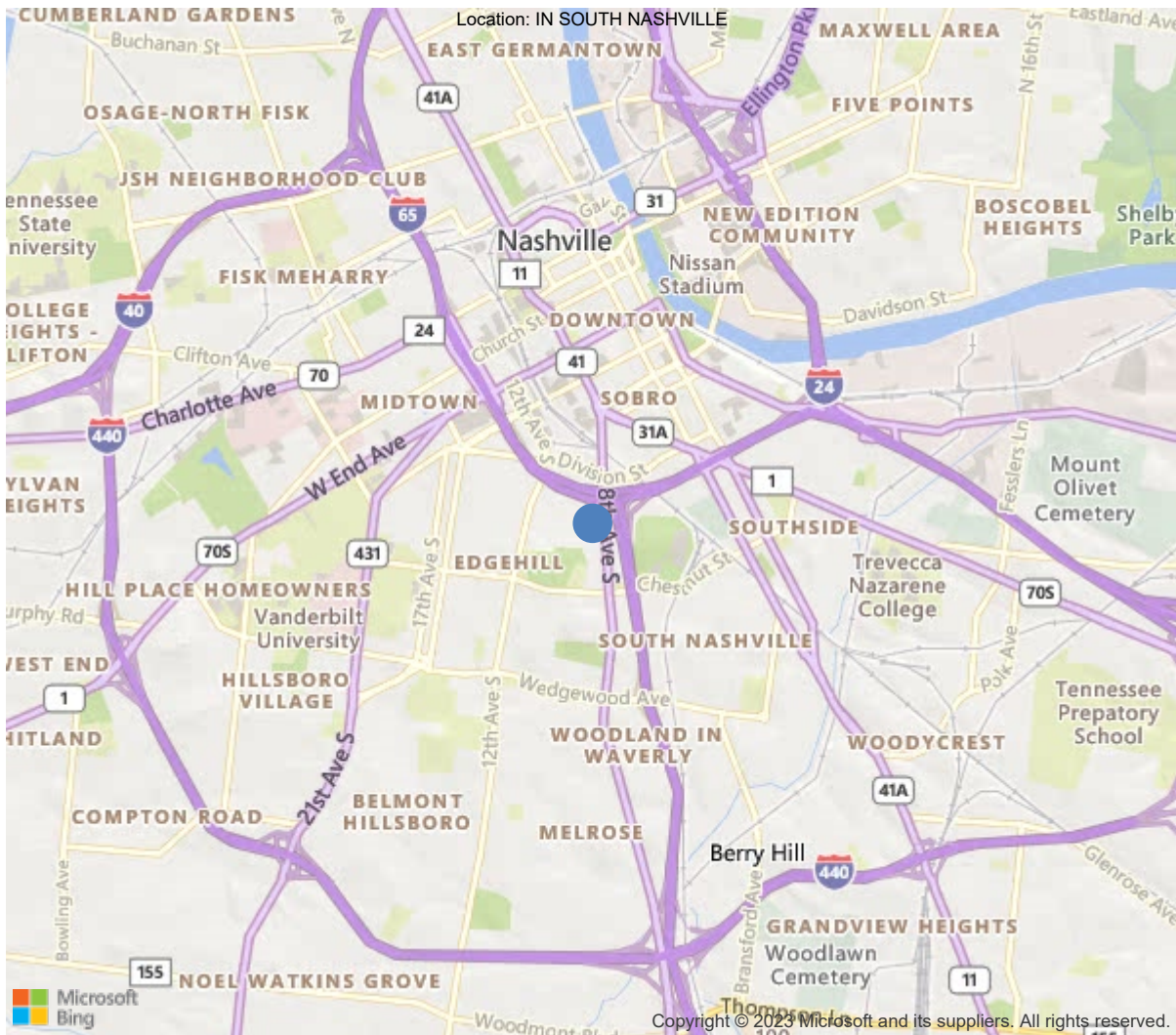


Latitude:36.14667, Longitude:-86.78000

Region 03, 19 - Davidson County

Team Leader: Jimmy Haynes

Inspectors: Ricky Knight, Harley Anderson



140 RL / 8TH AVE (SR 6)

36.14667, -86.78000

90 - LAST INSPECTION DATE 12/02/2021

10 - MIN. V.C. OVER DECK
(ROADWAY + SHOULDERS) 99.99 FT.

520 - MIN. V.C. OVER DECK
(EXCLUDES SHOULDERS) 99.99 FT.

36 - TRAFFIC SAFETY FEATURES

Br. Rail	Trans.	Appr. Rail	Terminal	SPEED LIM.
0	1	1	1	55

41 - STRC OPEN/CLOSED/POSTED A

58 - DECK 6

59 - SUPERSTRUCTURE 6

60 - SUBSTRUCTURE 6

61 - CHANL/CHANL PROTECTION N

62 - CULVERT AND RETAIN WALL N

71 - WATERWAY ADEQUACY N

72 - APPROACH RDWY ALIGNMENT 8

521 - OVERALL CONDITION 2 - Fair

16 - LATITUDE	17 - LONGITUDE
36.146667	-86.780000

N NOT APPLICABLE

9 EXCELLENT CONDITION

8 VERY GOOD CONDITION - NO
PROBLEMS NOTED.

7 GOOD CONDITION - SOME MINOR PROBLEMS.

6 SATISFACTORY CONDITION - MINOR
DETERIORATION OF STRUCTURAL
ELEMENTS.

5 FAIR CONDITION - ALL PRIMARY
STRUCTURAL ELEMENTS ARE SOUND BUT
MAY HAVE MINOR SECTION LOSS,
CRACKING, SPALLING OR SCOUR.

4 POOR CONDITION - ADVANCED SECTION
LOSS, DETERIORATION, SPALLING OR
SCOUR.

3 SERIOUS CONDITION - LOSS OF SECTION,
DETERIORATION, SPALLING OR SCOUR HAVE
SERIOUSLY AFFECTED PRIMARY
STRUCTURAL COMPONENTS. LOCAL
FAILURES ARE POSSIBLE. FATIGUE CRACKS
IN STEEL OR SHEAR CRACKS IN CONCRETE
MAY BE PRESENT.

2 CRITICAL CONDITION - ADVANCED
DETERIORATION OF PRIMARY STRUCTURAL
ELEMENTS. FATIGUE CRACKS IN STEEL OR
SHEAR CRACKS IN CONCRETE MAY BE
PRESENT OR SCOUR MAY HAVE REMOVED
SUBSTRUCTURE SUPPORT. UNLESS
CLOSELY MONITORED IT MAY BE
NECESSARY TO CLOSE THE BRIDGE UNTIL
CORRECTIVE ACTION IS TAKEN.

1 "IMMINENT" FAILURE CONDITION - MAJOR
DETERIORATION OR SECTION LOSS
PRESENT IN CRITICAL STRUCTURAL
COMPONENTS OR OBVIOUS VERTICAL OR
HORIZONTAL MOVEMENT AFFECTING
STRUCTURAL STABILITY. BRIDGE IS
CLOSED TO TRAFFIC BUT CORRECTIVE
ACTION MAY PUT IT BACK IN LIGHT SERVICE.

0 FAILED CONDITION - OUT OF SERVICE AND
BEYOND CORREC

Jimmy D. Haynes
TEAM LEADER SIGNATURE

IDENTIFICATION	
(1) State Names	47 - Tennessee
(8) Structure Number	19I00400079
(5) Inventory Route	1
(2) Highway Agency District	Region 3
(3) County Code	19 - Davidson
(4) Place Code	52006
(6) Features Intersected	8TH AVE (SR 6)
(7) Facility Carried	140
(9) Location	IN SOUTH NASHVILLE
(11) Mile Point	18.340 mi
(12) Base Highway Network	Yes
(13) LRS Inventory Rte & Subrte	19I0040001
(16) Latitude	36.146667
(17) Longitude	-86.780000
(98) Border Bridge State Code	
(99) Border Bridge Structure No.	
STRUCTURE TYPE AND MATERIAL	
(43) Main Structure Type	42
Material	4 - Steel continuous
Type	2 - Stringer/Multi-beam or girder
(44) Approach Structure Type	00
Material	0 - Other / None
Type	0 - Other / None
(45) No. of Spans in Main Unit	3
(46) No. of Approach Spans	0
(107) Deck Structure Type	1 - Concrete Cast-in-Place
(108) Wearing Surface/Protective System	
Type of Wearing Surface	6 - Bituminous
Type of Membrane	0 - None
Type of Deck Protection	0 - None
AGE AND SERVICE	
(27) Year Built	1972
(106) Year Reconstructed	0
(42) Type of Service	11
On	1 - Highway
Under	1 - Highway, with or without pedestrian
(28) Lane	
On	2
Under	4
(29) Average Daily Traffic	133586
(30) Year of ADT	2021
(109) Truck ADT	7 %
(19) Bypass, Detour Length	1 mi
GEOMETRIC DATA	
(48) Length of Maximum Span	71.9 ft
(49) Structure Length	158.1 ft
(50) Curb or Sidewalk Width	
Left	0.0 ft
Right	0.0 ft
(51) Bridge Roadway Width Curb to Curb	39.7 ft
(52) Deck Width Out to Out	41.7 ft
(32) Approach Roadway Width (W/Shoulders)	38.1 ft
(33) Bridge Median	1 - Open median
(34) Skew	84 Deg
(35) Structure Flared	0 - No flare
(10) Inventory Route Min Vert Clear	99.99 ft
(47) Inventory Route Total Horiz Clear	39.7 ft
(53) Min Vert Clear Over Bridge Rdwy	99.99 ft
(54) Min Vert Underclear	20.93 ft
Ref:	
(55) Min Lat Underclear RT	9.8 ft
Ref:	
(56) Min Lat Underclear LT	99.9 ft
NAVIGATION DATA	
(38) Navigation Control	N - Not applicable, no waterwa
(111) Pier Protection	
(39) Navigation Vertical Clearance	0.0 ft
(116) Vert-Lift Bridge Nav Min Vert Clear	ft
(40) Navigation Horizontal Clearance	0.0 ft

CLASSIFICATION	
(112) NBIS Bridge Length	Y
(104) Highway System	1
(26) Functional Class	11 - Urban Principal Arterial
(100) Defense Highway	1 - The inventory route is on
(101) Parallel Structure	R - The right structure of par
(102) Direction of Traffic	1 - way traffic
(103) Temporary Structure	
(105) Federal Lands Highways	0 - N/A
(110) Designated National Network	1 - The inventory route is par
(20) Toll	3 - On free road. The structu
(21) Maintain	1 - State Highway Agency
(22) Owner	1 - State Highway Agency
(37) Historical Significance	4 - Historical significance is
CONDITION	
(58) Deck	6
(59) Superstructure	6
(60) Substructure	6
(61) Channel & Channel Protection	N
(62) Culverts	N
LOAD RATING AND POSTING	
(31) Design Load	5 - MS 18 / HS 20
(63) Operating Rating Method	1
(64) Operating Rating	
Type	1 - Load Factor(LF)
Rating	68.40
(65) Inventory Rating Method	1 - Load Factor(LF)
(66) Inventory Rating	
Type	
Rating	32.40
(70) Bridge Posting	5 - Equal to or above legal loads
(41) Structure Open/Posted/Closed	A - Open, no restriction
APPRAISAL	
(67) Structural Evaluation	6
(68) Deck Geometry	6
(69) Clearances, Vertical/Horizontal	5
(71) Waterway Adequacy	N
(72) Approach Roadway Alignment	8
(36A) Bridge Railings	0 - Inspected feature does not meet
(36B) Transitions	1 - Inspected feature meets current
(36C) Approach Guardrail	1 - Inspected feature meets current
(36D) Approach Guardrail Ends	1 - Inspected feature meets current
(113) Scour Critical Bridges	N - Bridge not over waterway.
PROPOSED IMPROVEMENTS	
(75) Type of Work	
(76) Length of Structure Improvement	ft
(94) Bridge Improvement Cost	\$
(95) Roadway Improvement Cost	\$
(96) Total Project Cost	\$
(97) Year of Improvement Cost Estimate	
(114) Future ADT	177558
(115) Year of Future ADT	2042

INSPECTIONS *			
(90) Inspection Date	12/04/2023		
(91) Frequency	24		
(92) Critical Feature Inspection	Done	Freq. (Mon)	Date
A: Fracture Critical Detail	No		
B: Underwater Inspection	No		
C: Other Special Inspection	No		
<p>* The inspection date and frequency information in this box contains the current NBI date and frequency information. Please refer to the report header for the date this inspection was conducted.</p>			

PERFORMANCE EVALUATION

Time of Day Inspected 12:45 PM

Weather Conditions P Sunny 56

Vehicles Observed All types

LIVE LOAD BEHAVIOR

Sub Horiz./ Vert. Defl (No)

Sub Vibration (No)

Super Horiz./ Vert. Defl (Yes)

Super Vibration (Yes)

APPROACH

Alignment (Good)

Joints (Not visible)

PAVED OVER

Pavement (Good)

Embankment (Good)

Approach Drains (Good)

TRAFFIC SAFETY FEATURES

Bridge Railing Rating (Fair)

MOD SCALE & CRACKS

Transitions Rating (Fair)

MOD. IMPACT DAMAGE 'A' END LEFT

Guardrail Rating (Fair)

MOD. IMPACT DAMAGE 'A' END LEFT

Guardrail Terminal Rating (Poor)

SIGNS POSTED ON ROUTE

Paddleboards No

Vertical Clearance (<14'-6") No

Posted Height

Narrow Bridge Signs No

One Lane Bridge Signs No

Other Signs or Plaques

Weight Limit Posted Not Needed

Gross Tons

Single-unit Vehicle Tons

Multi-unit Vehicle Tons

564 Assigned Bridge Name

DECK

Wearing Surface Type		Asphalt	Wearing Surface Depth	2
Wearing Surface	(Good)	TRANS CRACKS AT SPAN 3		
Deck - Structural Condition	(Fair)	LT TRANS CRACKS, SP #2 LIGHT SPALLS WITH EXPOSED STEEL, SP. #3-SPALL ALONG BM. 'E'		
Parapet	(Fair)	MOD. SCALE AND MAP CRACKS LEFT SIDE. RIGHT SIDE - PATCHED		
Expansion Joints	(Poor)	HVY DEBRIS ACCUMULATION- 'A' END, 'B' END- PAVED OVER		

SUPERSTRUCTURE

Bearing Devices	(Fair)	ABUT 1 BRG A - POOR - BROKEN ANCHOR BOLT; ABUT. #1 "C" & "D" - POOR - BROKEN/MISSING PINS; ABUT #2 - FAIR - LGH-MOD CORR.-PAINTED; ABUT. #1- ROCKED BACKSTATION
Girders	(Fair)	LARGE AREAS OF CORROSION; SP 3 BMs 'D&E'--L-M CORR W/LGT SECT LOSS
Diaphragms	(Good)	
Superstructure Paint	(Poor)	LARGE AREAS OF HEAVY PAINT LOSS.
Alignment of Members	(Good)	

ABUTMENTS

Abutment Caps	(Fair)	ABUT #1- SCALE AND MAP CRACKS
Abutment Wings	(Poor)	ABUT #2 LEFT WING - HEAVY SPALLS FROM IMPACT DAMAGE.
Abutment Backwall	(Good)	
Abutment Plumb	(Good)	
Abutment Footing	(Not visible)	
Abutment Piles	(Not Visible)	
Abutment Embankment	(Good)	
Abutment Bearing Surface	(Good)	
Abutment Slope Paving	(Fair)	ABUT. #1 LT. SIDE-MOD EROSION; BROKEN SECTION OF CONCRETE
Abutment Rip Rap	(Good)	

BENTS

Bent Caps	(Good)	H.L. MAP CRACKS
Bent Columns	(Good)	H.L. MAP CRACKS & IN-PLACE SPALLS, BENT #2 COL. 'B' -SPALL
Bent Plumb	(Good)	
Bent Footing	(Not Visible)	
Bent Piles	(Not Visible)	
Bent Bearing Surface	(Good)	
Piles Need Replacement	(No)	

Inspection Team's Summary

3 span Bridge / W.P.G.
I-40 EB / 8TH AVE (SR 6)

Approach alignment, embankment, and pavement are good. Bridge parapet railing is fair with moderate scale and delamination left side. Approach rails are fair with moderate impact damage at 'A' end left. End terminal at 'A' end right side is good and standard.

The asphalt wearing surface is good. Expansion joint at 'B' end is paved over. Joint at 'A' end is fair with moderate debris accumulation. Deck structural condition is fair with hairline cracks with efflorescence and light spalls in span #2.

Girders are fair with heavy paint loss and surface corrosion. Girder "D" and "E" are fair with light-moderate corrosion and light section loss. Bearing devices are fair with light-moderate corrosion being painted over. However, bearings 'C' & 'D' at abutment #1 are poor with broken/missing bearing pins, and bearing 'A' abutment #1 is poor with a missing anchor bolt.

Abutment cap and backwall at abutment 1 are fair with scale and map cracks with efflorescence. Wing at abutment #2 left side is poor with heavy spall resulting from impact damage.

Underpass pier protection is non-existent.

General Inspection Comment

REPAIRED SPALLING LEFT WING ABUT. # 2, REPAIRED PARAPET SPAN # 2 LEFT SIDE, & CLEANED AND PAINTED BEARING AT BOTH ABUT. 09/07/2017 H.H. & S.A.

ELEMENTS	DESCRIPTION	UNITS	TOTAL	CS1	CS2	CS3	CS4
12	Re Concrete Deck	SF	6588	6533	55	0	0
1080	Delamination/Spall/Patched Area	SF	5	0	5	0	0
1130	Cracking (RC and Other)	SF	50	0	50	0	0
510	Wearing Surfaces	SF	6261	6261	0	0	0
(12) Element record added 2015-11-18.							
(1080-12) Element record added 12/3/2019							
(1130-12) Element record added 12/3/2019							
(510-12) Element record added 2015-11-18.							
107	Steel Opn Girder/Beam	LF	791	541	250	0	0
1000	Corrosion	LF	250	0	250	0	0
515	Steel Protective Coating	SF	6724	0	3362	0	3362
3410	Chalking (Steel Protective Coatings)	LF	6724	0	3362	0	3362
(107) Element record added 2015-11-18.							
(1000-107) Element record added 12/3/2019							
(515-107) Element record added 2015-11-18.							
(3410-515-107) Element record added 12/3/2019							
205	Re Conc Column	EA	6	0	6	0	0
1080	Delamination/Spall/Patched Area	EA	1	0	1	0	0
1130	Cracking (RC and Other)	EA	5	0	5	0	0
(205) Element record added 2015-11-18.							
(1080-205) Element record added 12/3/2019							
(1130-205) Element record added 12/3/2019							
215	Re Conc Abutment	LF	85	78	7	0	0
1130	Cracking (RC and Other)	LF	7	0	7	0	0
(215) Element record added 2015-11-18.							
(1130-215) Element record added 12/3/2019							
234	Re Conc Pier Cap	LF	75	35	40	0	0
1130	Cracking (RC and Other)	LF	40	0	40	0	0
(234) Element record added 2015-11-18.							
(1130-234) Element record added 12/3/2019							
301	Pourable Joint Seal	LF	43	0	0	0	43
2350	Debris Impaction	LF	43	0	0	0	43

ELEMENTS	DESCRIPTION	UNITS	TOTAL	CS1	CS2	CS3	CS4
(301) Element record added 2015-11-18.							
(2350-301) Element record added 12/3/2019							
311	Moveable Bearing	EA	15	5	4	3	3
1000	Corrosion	EA	9	0	4	3	2
2210	Movement	EA	1	0	0	0	1
515	Steel Protective Coating	SF	30	10	8	12	0
3410	Chalking (Steel Protective Coatings)	EA	20	0	8	12	0
(311) Element record added 2015-11-18.							
(1000-311) Element record added 12/3/2019							
(2210-311) Element record added 12/3/2019							
(515-311) Element record added 2015-11-18.							
(3410-515-311) Element record added 12/3/2019							
313	Fixed Bearing	EA	5	5	0	0	0
515	Steel Protective Coating	SF	10	10	0	0	0
(313) Element record added 2015-11-18.							
(515-313) Element record added 2015-11-18.							
331	Re Conc Bridge Railing	LF	316	0	310	5	1
1080	Delamination/Spall/Patched Area	LF	316	0	310	5	1
(331) Element record added 2015-11-18.							
(1080-331) Element record added 12/3/2019							

Equipment List

General Inspection

☐ Pocket knife

☐ Sounding/chipping hammer

☐ Chain drag

☐ Range pole

☐ 25' rod - depth and clearance

Visual Aid

☐ Yes Binoculars

☐ Yes Flashlight

☐ Magnifying glass

☐ Hand mirror

Cleaning

☐ Wisk broom

☐ Wire brush

☐ Flat bladed screwdriver

☐ Hand shovel

☐ Penetrating oil (WD-40, etc.)

Tools For Access

☐ Ladders

☐ Rope

☐ Waders

☐ Machete or bush axe

Comment

Tools For Measuring

☐ Masonry/Wood Ruler

☐ Yes 6' Pocket Tape

☐ Yes 25' and 100' Tape

☐ Calipers

☐ Thermometer

☐ Carpenter's Level

☐ String and Weighted line (plumb bob)

Special Purpose Equipment

☐ Reach All

☐ Bucket Truck

☐ Traffic control

☐ Boat

☐ Sonar depth finder

☐ Increment borer

☐ Survey equipment

☐ Safety Harness

☐ Climbing equipment

☐ Dye penetrant

☐ Drone

Special Purpose Equipment



Bridge number



Clearance left side span 2



Clearance right side span 2



A approach



B approach



A approach bridge rail spall left



B approach guardrail impact damage



A approach guardrail impact damage



A approach guardrail impact damage



Span 3 transverse cracks



VAD



Overhang span 1 left side spall



Span 3 bay C in place spall



Span 3 bay B spall at abutment 2



Span 3 bay A spall at abutment 2



Overhang span 3 left side patch



Overhang span 3 right side in place spall



Overhang span 3 right side spall



Span 3 bay D spall top flange beam E



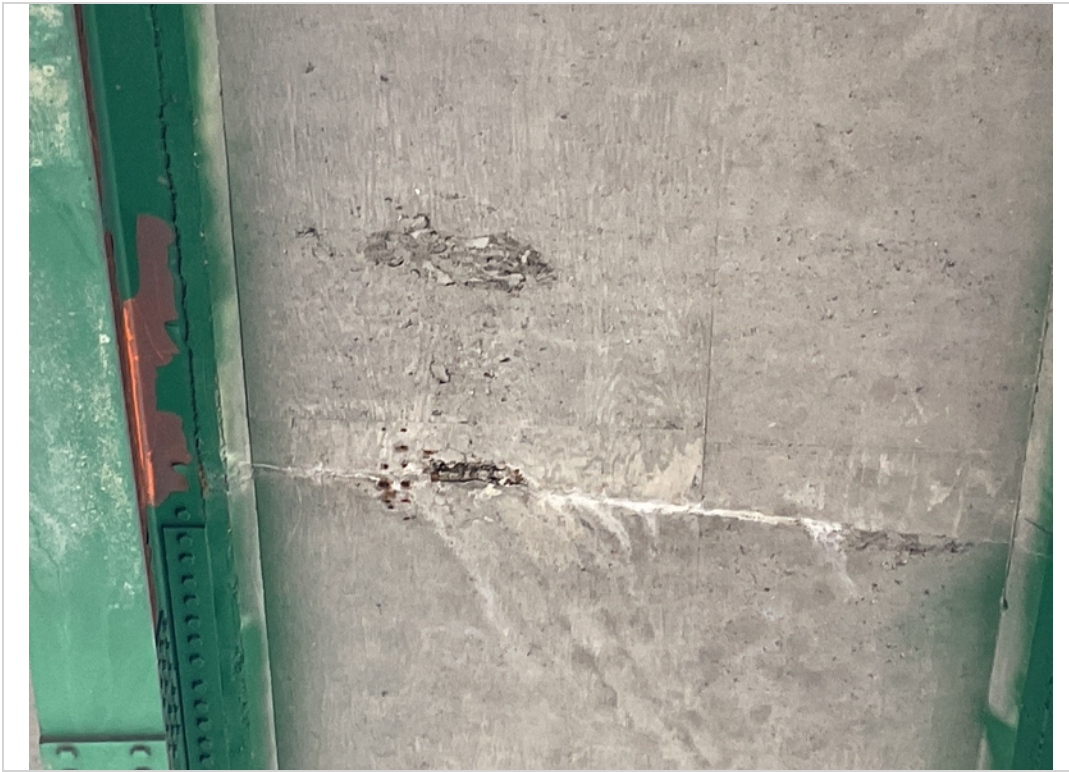
Span 3 bay D spall



Span 2 bay A spall with exp steel



Span 2 bay C spall with exp steel



Span 2 bay B spall



Bottom deck span 3



Span 2 bay A trans cracks with eff



Overhang span 2 map cracks with eff left side



Bottom deck span 2



Bottom deck span 1



Bent 1 broken light case



Span 1 joint



Bent 1 bearing A



Abutment 1 missing anchor bolt bearing A riser A heavy scale



Abutment 1 bearing D missing pin



Abutment 1 bearing C missing pin



Abutment 2 bearing E light corrosion



Abutment 1 bearing E rocked backstation



Abutment 1 bearing A heavy corrosion



Span 2 Girder A top flange corrosion with eff



Span 3 Girder C corrosion



Span 3 Girder E top flange corrosion



Span 3 Girder E top flange corrosion



Span 3 Girder E corrosion



Span 3 Girder C corrosion



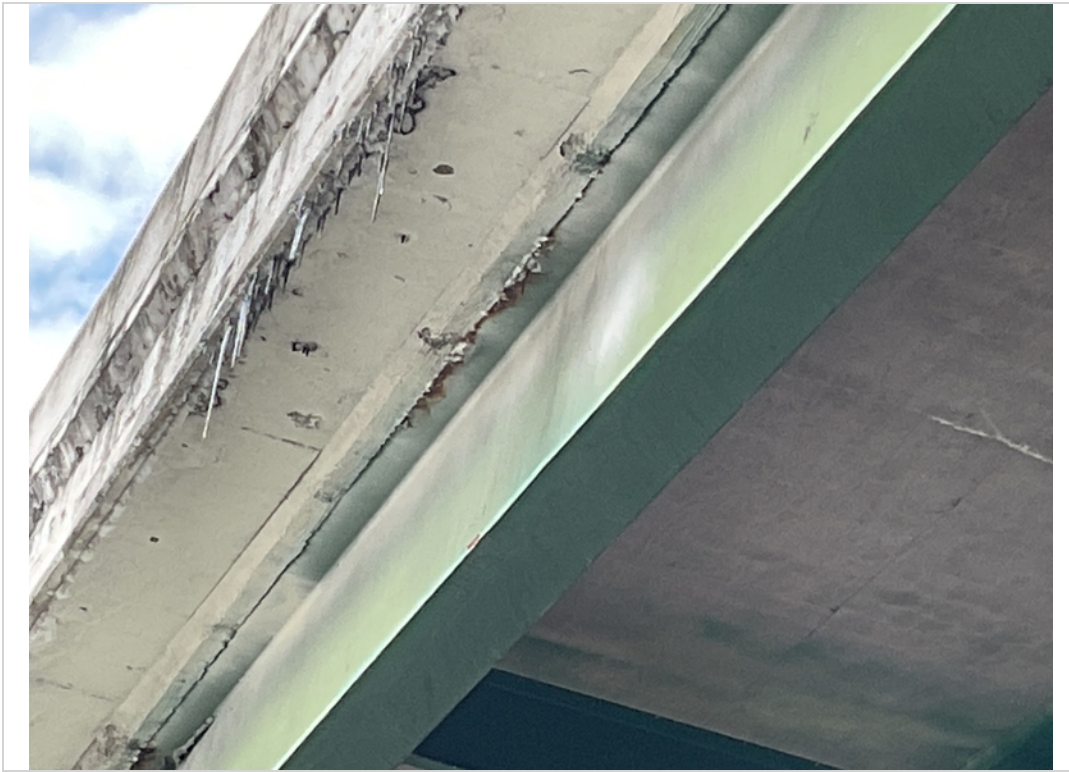
Span 2 Girder E top flange corrosion with eff



Span 2 Girder E bottom flange corrosion



Span 2 Girder C corrosion



Span 2 Girder A top flange corrosion



Span 1 Girder B corrosion



Span 1 Girder D corrosion



Span 1 Girder E corrosion



Abutment 1



Abutment 2 cracks with eff



Abutment 2



Abutment 1 water stains



Abutment 1 cap and backwall scale map cracks



Abutment 2 left wing map cracks with eff



Abutment 1 back wall map cracks with eff



Abutment 2 backwall cracks with eff



Abutment 1 backwall cracks with eff



Abutment 1 erosion left side



Abutment 1 slope pavement broken



Bent 1 cap horizontal crack



Bent 1 cap horizontal crack



Bent 2 column C vertical crack



Bent 2 column A vertical crack



Bent 2 column B vertical crack



Bent 2 column C vertical crack



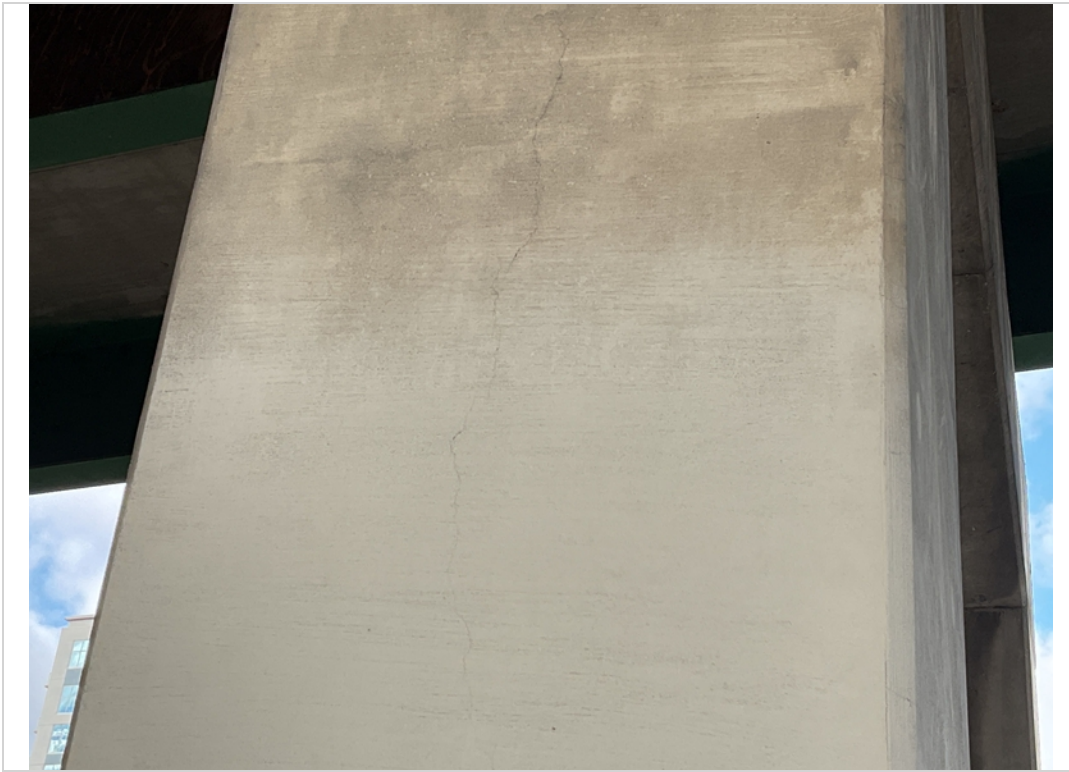
Bent 2 column B spall



Bent 2 backside



Bent 1 column C HSP



Bent 1 column B vertical crack



Bent 1 column C vertical crack



Bent 1 frontside



Abutment 1 debris on cap and slope pavement

Maintenance Recommendations

525 - Repair List # N

523 - Repair List Add Date

524 - Repair List Revise Date 12/2/2021

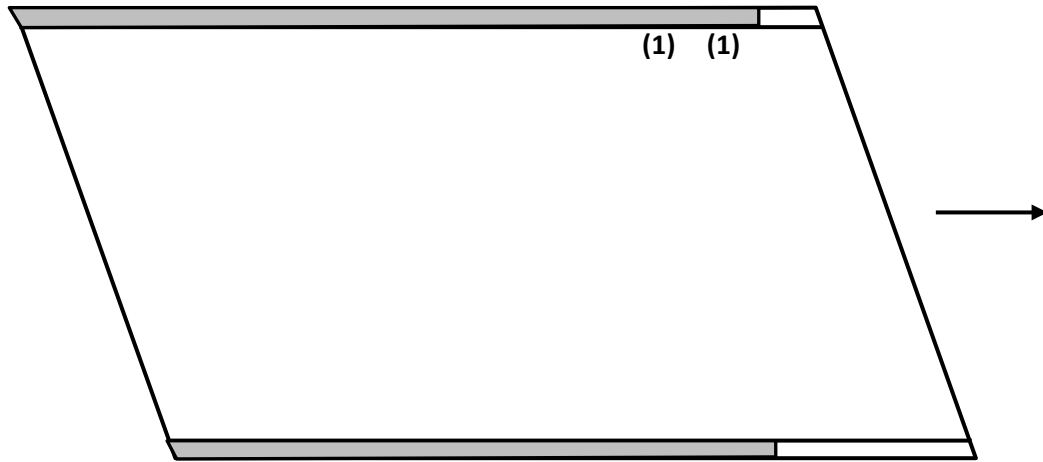
Date Added	Recommendation	Priority
09/08/2017	REPAIR BEARING "A", "C", & "D" AT ABUTMENT #1	2
12/02/2021	CLEAN DECK SHOULDERS	
01/04/2016	CLEAN AND PAINT ALL STRUCTURAL STEEL	2
01/04/2016	REPAIR APPROACH GUARDRAIL @ "A" END LT.	
01/04/2016	CLEAN EXPANSION JOINT @ "A" END	
01/04/2016	CLEAN DEBRIS FROM ABUTMENT CAPS	
01/04/2016	TEXTURE COAT BRIDGE RAIL	
01/04/2016	REPAIR UNDERPASS LIGHTING	
12/01/2017	REPAIR EROSION LEFT SIDE OF SLOPE PAVEMENT AT ABUTMENT #1	

Approach 'A'

Date 12/4/2023

JH

Bridge Location No. 19 I-40 18.34 RT.
County Route Log Mile



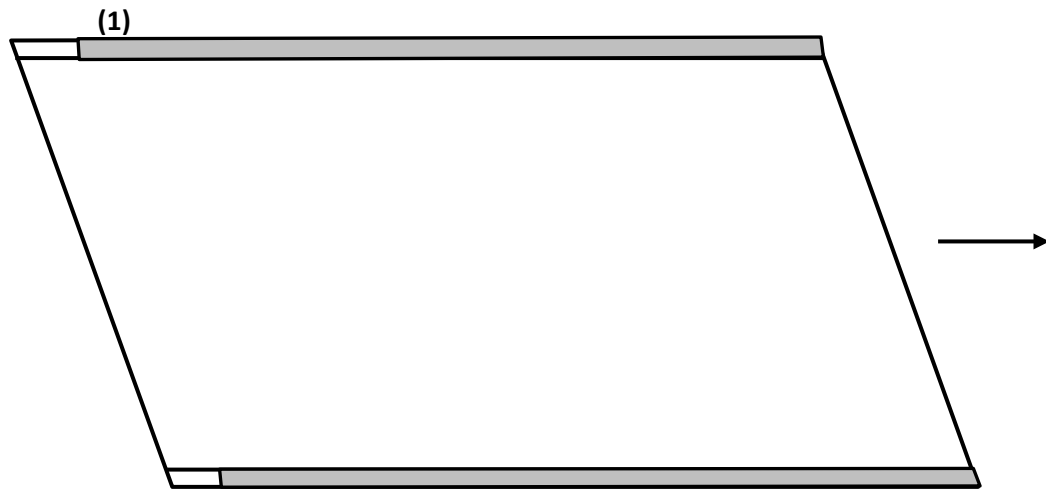
G.RAILS	GOOD	(1) IMPACT DAMAGE W/ MISSING BLOCKOUT
PAVEMENT	GOOD	
EMBANKS	GOOD	
PARAPETS	GOOD	

Approach 'B'

Date 12/4/2023

JH

Bridge Location No. 19 I-40 18.34 RT.
County Route Log Mile



G.RAILS	GOOD	(1) LIGHT IMPACT DAMAGE
PAVEMENT	GOOD	
EMBANKS	GOOD	
PARAPETS	GOOD	

Top of Deck Span No. 1

Date 12/4/2023
JH

Bridge Location No. 19 I40 18.34 RT
County Route Log Mile

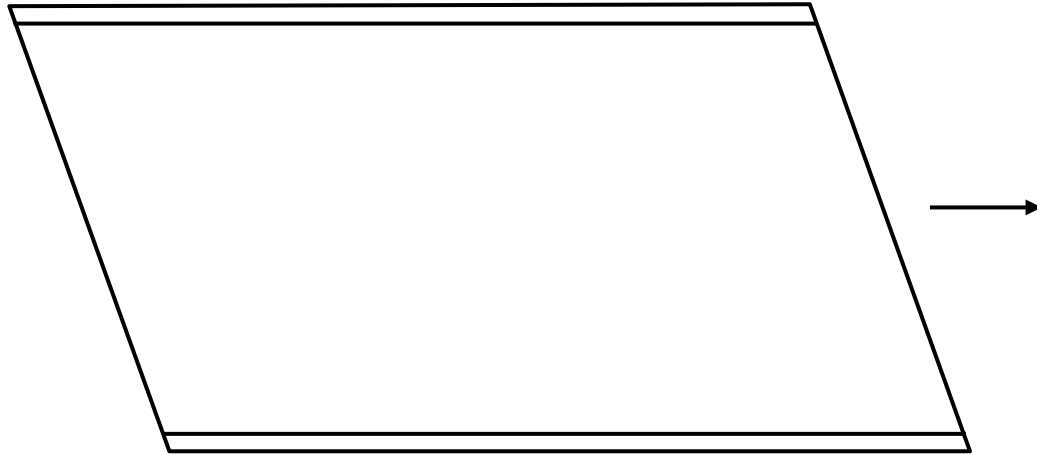


DECK	NV	ASPHALT- GOOD
PARAPETS	FAIR	MOD SCALE & RANDOM CRACKS LEFT SIDE, RT SIDE LARGE
		PATCHED AREAS
JOINT	POOR	HVY. DEBRIS ACCUMULATION

Top of Deck Span No. 2

Date 12/4/2023
JH

Bridge Location No. 19 I40 18.34 RT
County Route Log Mile



DECK	NV	ASPHALT - GOOD
PARAPETS	FAIR	MOD SCALE & RANDOM CRACKS LEFT SIDE, RT SIDE LARGE
		PATCHED AREAS

Top of Deck Span No. 3

Date 12/4/2023
JH

Bridge Location No. 19 I40 18.34 RT
County Route Log Mile

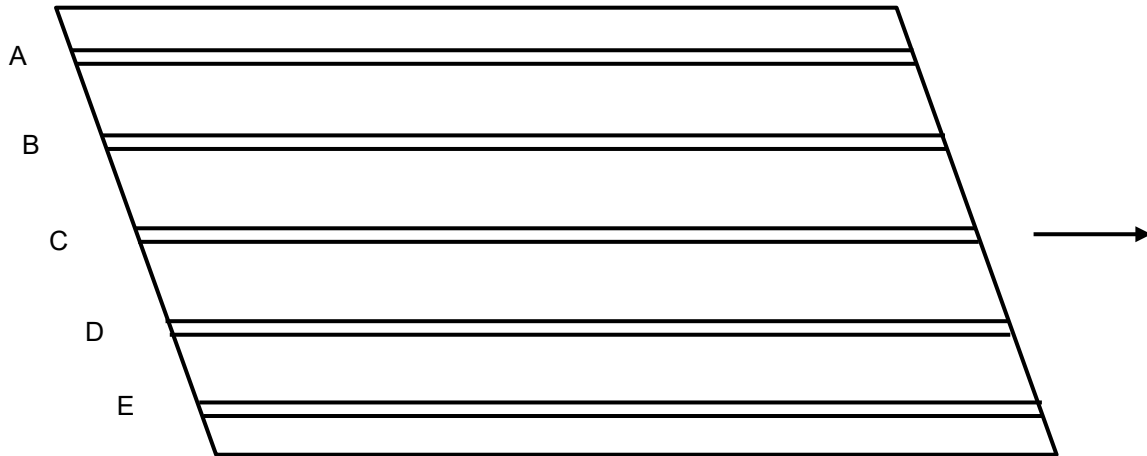


DECK	NV	AC OVERLAY - GOOD; TRANS CRACKS
PARAPETS	FAIR	MOD SCALE & RANDOM CRACKS LEFT SIDE, RT SIDE LARGE
		PATCHED AREAS

Bottom of Slab Span No. 1

Date 12/4/2023
HA

Bridge Location No. 19 I40 18.34 RT
County Route Log Mile

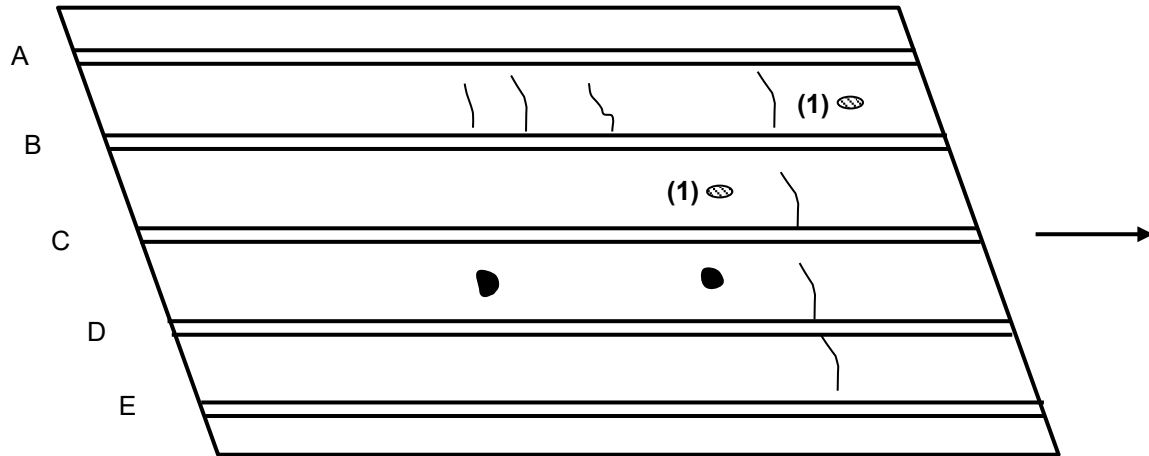


DECK	GOOD	
DIAPHRAGMS	GOOD	LIGHT SURFACE RUST
BEAMS	FAIR	SURFACE RUST - ALL BEAMS
PAINT	POOR	LARGE AREAS OF PEELING BM'S B, C, D & E & DIAPHRAGMS
OVERHANGS	GOOD	

Bottom of Slab Span No. 2

Date 12/4/2023
HA

Bridge Location No. 19 I40 18.34 RT
County Route Log Mile

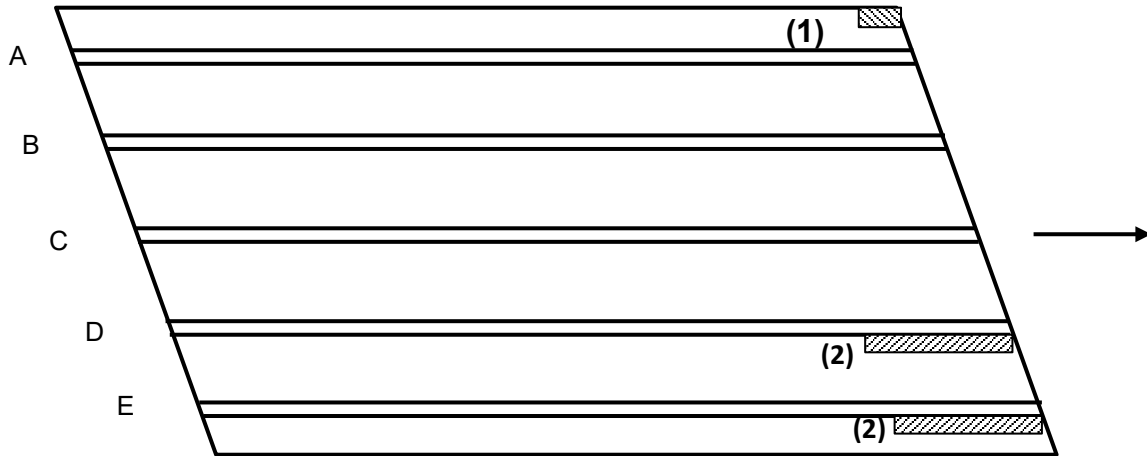


DECK	FAIR	(1) SPALLS W/ EXP STL UPTO 1'D X 1"DP; LGT TRANS HCs W/EFF
		@ BAY "A"
DIAPHRAGMS	GOOD	
BEAMS	FAIR	SURFACE RUST- ALL BEAMS
OVERHANG	FAIR	EFF. & LEACHING
PAINT	POOR	AREAS OF COMPLETE PAINT LOSS, ALL BEAMS
OVERHANGS	GOOD	

Bottom of Slab Span No. 3

Date 12/4/2023
HA

Bridge Location No. 19 I40 18.34 RT
County Route Log Mile

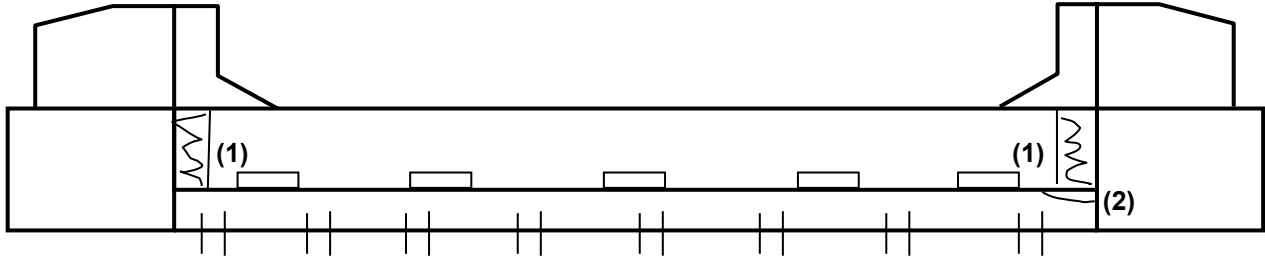


DECK	GOOD	(1) PATCH; (2) SPALLS TOP FLANGE UPTO 10' LENGTH
DIAPHRAGMS	GOOD	
BEAMS	FAIR	AREAS OF HVY PAINT LOSS W/ SURFACE RUST
'D' & 'E'	FAIR	LGH-MOD CORR. 6' L FROM ABUT. W/ LGH SECT. LOSS - TOP
		FLANGE
PAINT	POOR	HVY LOSS AREAS
OVERHANGS	GOOD	

Abutment No. 1

Date 12/4/2023
RK

Bridge Location No. 19 I40 18.34 RT
County Route Log Mile

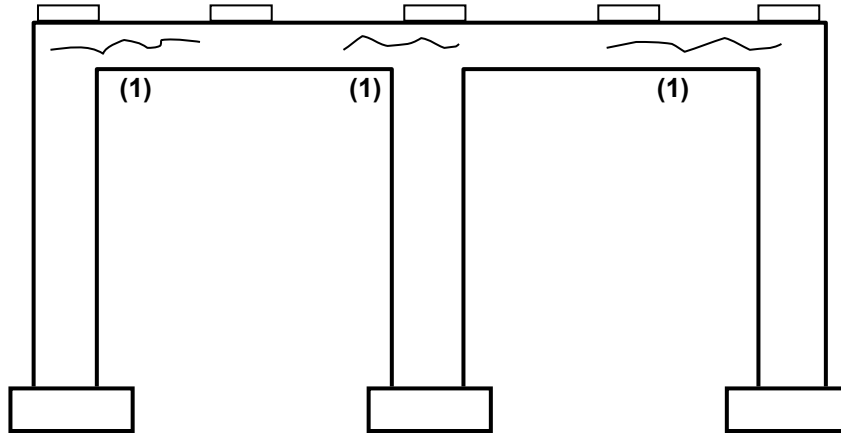


BACKWALL	FAIR	(1) SCALE / RANDOM MAP CRACKING W/ DELAM @ 3' X 3'
CAP	FAIR	(2) SCALE 2' L X 1' H- SPALL 1'L X 6" W X 1/2" DP
WINGS	GOOD	MAP CRACKING W/ EFF., RANDOM DIAG H.C.'S
BEARINGS	FAIR	LGH-MOD. CORR.; HVY DEBRIS BULD-UP ON BEARINGS; ROCKED
		BACKSTATION UPTO 15 DEGREES
"A"	POOR	A' MISSING ANCHOR BOLT
"C" & "D"	POOR	MISSING/BROKEN BEARING PINS
RISERS	GOOD	
"A"	FAIR	SCALE, SPALL 3'L X 1' W X 1" DP
SLOPE PVT	FAIR	EROSION LEFT SIDE FULL LENGTH X 3'W X 8"DP
		BROKEN SECTION 4'L X 4'W

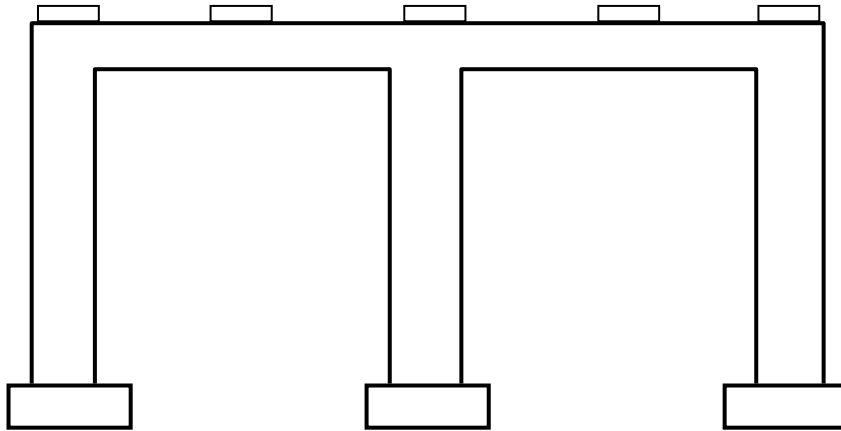
BENT # 1

Date 12/4/2023
RK

Bridge Location No. 19 I40 18.34 RT
County Route Log Mile



FRONT



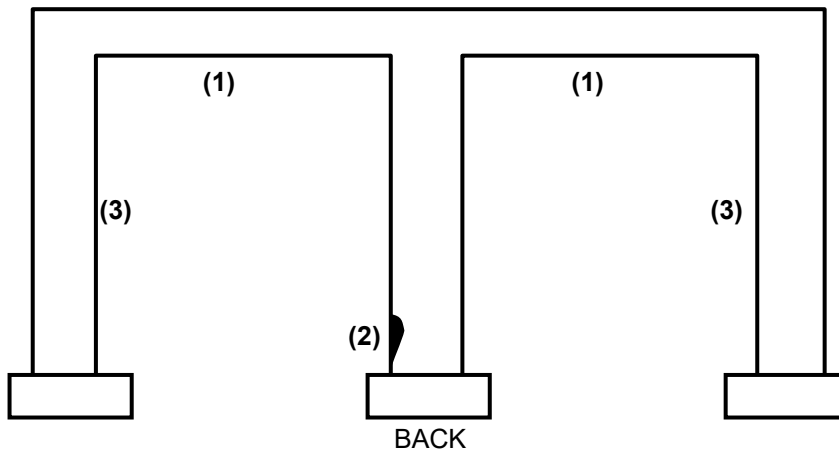
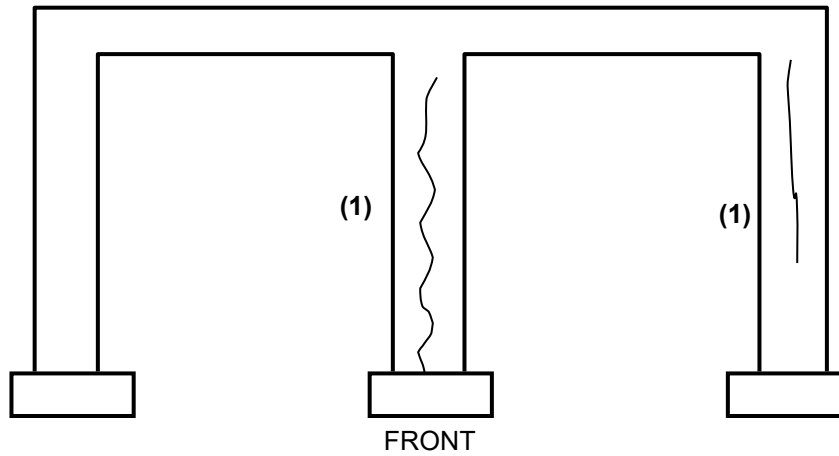
BACK

CAP	GOOD	(1) HORIZONTAL HAIR CRACK
COLUMNS	GOOD	VERTICAL HAIR CRACK ALL COLUMNS / FULL LENGTH
		RANDOM I.P.B.O.'S UP TO 3" DIA- ALL BEAMS
'C'		RANDOM H.S.P.O.'S
FOOTING	NV	
BEARINGS	GOOD	
RISERS	GOOD	

BENT # 2

Date 12/4/2023
RK

Bridge Location No. 19 I40 18.34 RT
County Route Log Mile

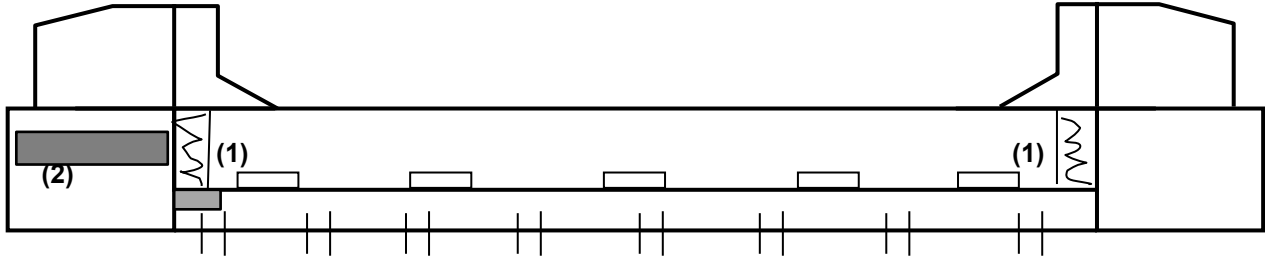


CAP	GOOD	(1) RANDOM HAIR CRACKS
COLUMNS	GOOD	(2) SPALL 18" L X 6" W X 1.5" DP; (3) H.C. FULL LENGTH
FOOTING	NV	
BEARINGS	GOOD	
RISERS	GOOD	

Abutment No. 2

Date 12/4/2023
RK

Bridge Location No. 19 I40 18.34 RT
County Route Log Mile



BACKWALL	GOOD	(1) SCALE / LEACHING / DELAM W/ EFF. 3' X 3'; RANDOM VERT. CRACKS W/ EFF.
CAP	GOOD	MOD CRACKING W/EFF.
WINGS	FAIR	MAP CRACKING W/ EFF.; (2) SPALL W/ EXP. STL. 8' X 2.5' X 4" DP
BEARINGS	GOOD	LGH CORROSION-PAINTED OVER
"E"	FAIR	MOD. CORROSION
RISERS	GOOD	
SLOPE PVT	GOOD	

Horizontal and Vertical Clearances

Date 12/4/2023

Bridge Location No. 19 I40 18.34 RT
County Route Log Mile

